



PLEASE READ AND FOLLOW ALL WARNINGS



Universal Tool

UT9160 HEAVY DUTY AIR SAW

Read Operating Instructions

Always become familiar with all the instructions and warnings before operating any power tool.

Always Wear Approved Eye Protection

Impact resistant eye protection should meet or exceed the standards as set forth in the United States ANSI Z87.1, Occupational and Educational Eye and Face Protection. Look for the marking Z87.1 on your eye protection to insure that it is an approved style. For further information, ANSI Z87.1, Occupational and Educational Eye and Face Protection, is available from the American National Standards Institute, Inc., 11 West 42nd Street, New York, NY 10036.

Hearing Protection is Recommended

Hearing protection should be used when the noise level exposure equals or exceeds an 8 hour time-weighted average sound level of 85 dBA. Process noise, reflective surfaces, other tools being operated nearby, all add to the noise level present in your work area. If you are unable to determine your noise level exposure, we recommend the use of hearing protection.

Avoid Prolonged Exposure to Vibration

Tools can vibrate during use. Prolonged exposure to vibration or very repetitive hand and arm movements, can cause injury. Stop using any tool if discomfort, tingling feeling or pain occurs. You should consult your physician before resuming use of the tool.

90 PSIG Maximum

This tool is designed to operate at

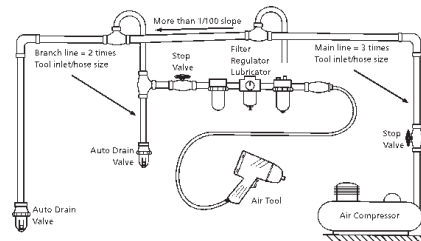
an air pressure of 90 pounds per square inch gauge pressure (90 PSIG) maximum, at the tool. Use of higher air pressure can, and may cause injury. Also, the use of higher air pressure places the internal components under loads and stresses they were not designed for, causing premature failure. The air supply should be clean and dry, preferably lubricated. For best results, drain the moisture from your compressor daily.

WARNING:

Some dust created by power sanding, sawing, grinding, drilling, and other construction activities contains chemicals known to cause cancer, birth defects or reproductive harm. Some examples of these chemicals are:

- Lead from lead-based paints
- Crystalline silica from bricks, cement and other masonry products
- Arsenic and chromium from chemically treated lumber

Your risk from these exposures varies, depending on how often you do this type of work. To reduce your exposure to these chemicals, work in a well-ventilated area and work with approved safety equipment such as those dust masks that are specially designed to filter out microscopic particles.



Standard Accessories:

- 922A Swivel Air Inlet Joint
- 350900 Carrying Blow Case
- Bi-Metal Saw Blade- 300 mm X 17 mm in 8/12 and 14 TPI
- 3 MM Hex Wrench

altered, the modifier shall provide the safeguards to enable it to be safely used in the operations intended and to comply with any applicable provisions as contained in ANSI B186.1.

Safety Instructions

The following instructions are furnished as general guidelines for use of your pneumatic tool. They cannot comprehensively cover all possible or conceivable uses of the subject tool. For additional information on the safe use of air tools, we advise you to obtain a copy of ANSI B186.1 Safety Code for Portable Air Tools, available from the following source:

American National Standards Institute, Inc.
11 West 42nd Street
New York, NY 10036.

The use of the word "shall" in the following instructions, indicates that adherence to the particular requirement is necessary to conform to ANSI B186.1.

Tool Application and Usage

Portable tools shall be used only for the purposes intended in their design and within the capacity for which they were intended and rated. It shall be the tool owner's and/or employer's responsibility to instruct each operator in the safe use of the tool. Tools shall not be used without guards and safety devices as furnished by the manufacturer. Where an air tool is modified or

Tool Installation

Pressure regulators shall be used to limit air pressure to the rated pressure where the supply pressure exceeds the tool's rated pressure. Air hoses and lines shall be relieved of compressed air before being disconnected or disjointed, unless there is automatic valve closing protection at the joint being separated. Synthetic lubricants which can cause deterioration of elastomer seals shall not be used in air systems of air tools.

Tool Maintenance

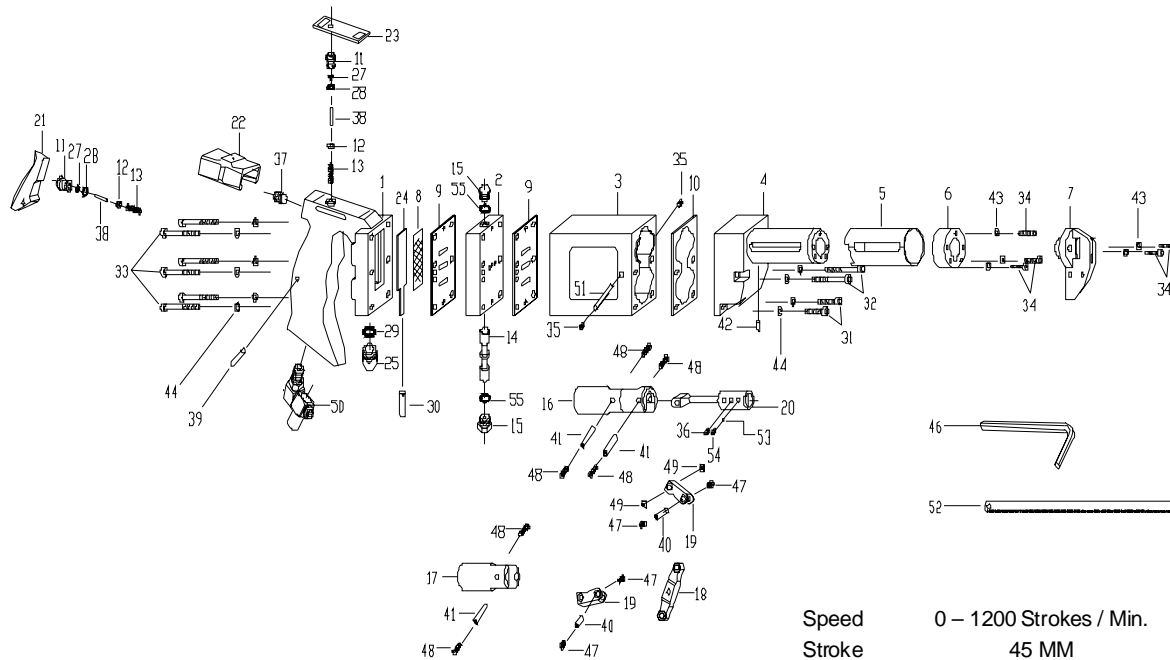
It shall be the tool owner's and/or employer's responsibility to assure that tools are maintained in a safe operating condition. Tool maintenance and repair shall be performed by authorized, trained, competent personnel. Tools shall be disconnected from their compressed air supply before repairs are attempted. Repairs shall be consistent with the manufacturer's recommended procedures. Tool, hoses and fittings shall be replaced if unsuitable for safe operation. It shall be the tool owner's and/or employer's responsibility to keep required rating markings and warnings on the tool in legible condition.



Florida Pneumatic
A Division of Florida Pneumatic Manufacturing Corporation
851 Jupiter Park Lane, Jupiter, Florida 33458
Toll Free 1-800-327-9403

Read these instructions carefully before attempting to install, operate or service this Florida Pneumatic product. Failure to comply with the instructions could result in personal injury and/or property damage! Retain these instructions for future reference.





Speed	0 – 1200 Strokes / Min.
Stroke	45 MM
Air Consumption	0.17 M3/Min.(6.5 CFM)
Working Air Pressure	6.3 Kg/Cm2 (90 PSI)
Air Inlet Size	1/4" PT or NPT
Min. Hose Size	3/8" (9.5mm) I.D.
Sound Pressure	<76 dBA
Vibration	< 6 m/s2
Weight	2.5 Kg (5.5 Lbs)
Length	400MM (15-3/4")
Width	41 MM (1-5/16")
Height	134MM (5-1/4")
Limited Warranty	
Packing/Ctn(Pcs/N.W.:KG/G.W.:KG/Cu.Ft.)	10 / 25 / 27 / 2.3

Ref.	Part #	Description
1	9350101	Handle
2	9350102	Valve Unit Body
3	9350103	Body
4	9350114	Front End Housing (3/4" Slot)
5	9350105	Silencer Guard
6	9350116	End Cap (3/4" Slot)
7	9350117	Nosepiece (3/4" Slot)
8	9350108	Filter
9	9350109	Gasket-Valve Unit Body (2)
10	9350110	Gasket-Body to Front End Housing
11	9350211	Valve Stem Bushing (2)
12	9121605	Valve Seat (2)
13	9656204	Valve Spring (2)
14	9350301	Valve Rod
15	9350302	Valve Rod Cap (2)
16	9350401	Top Piston
17	9350402	Bottom Piston
18	9350403	Middle Link Rod
19	9350404	Outer Link Rod (2)
20	9350501	Connecting Rod
21	9350601	Trigger
22	9350602	Safety Switch
23	9350701	Safety Nameplate
24	9350702	Oil Pad
25	9350703	Visible Oil Container
27	9OR0307	O-Ring (2)
28	9OR0812	O-Ring (2)
29	9OR1217	O-Ring
30	9350705	Sleeve
31	9W316241	Socket Head Cap Screw (2)
32	9W316243	Socket Head Cap Screw (2)
33	9W316244	Socket Head Cap Screw (6)
34	940716	Socket Head Cap Screw (5)
35	9W516180	Set Screw (2)
37	9W104200	Set Screw
38	9RP3025	Roll Pin (2)
39	9SP3020	Spring Pin
40	9350405	Hollow Shaft (S) (2)
41	9350406	Hollow Shaft (L) (3)
42	9SP0306	Spring Pin
43	9SW0407	Spring Washer (5)
44	9SW0508	Spring Washer (10)
46	9314933	3 MM Hex Wrench
47	9F40706	Screw (4)
48	9F40712	Screw (6)
49	9PW0612	Washer (2)
50	922A19	1/4"NPT/Universal Swivel Air Inlet
	922A18	1/4"NPT/Universal Swivel Air Inlet
51	9RP6423	Roll Pin
52	9350812L	(3/4") 300-8/12-SL Saw Blade
	9350914L	(3/4") 300-14-ST Saw Blade
53	9SB0047	Steel Ball (2)
54	9W104200	Set Screw (2)
55	9OR0913	O-RING
56	9SP5210	Spring Pin

Florida Pneumatic warrants its tools to be free from defects in material and workmanship for two years from the date of purchase. This warranty does not apply to tools which have been abused, misused, modified or repaired by someone other than Florida Pneumatic or its authorized service centers. If a Florida Pneumatic proves defective in material of workmanship within one year after purchase, return it to any authorized service center or to Florida Pneumatic, freight prepaid. Please enclose your name, address and adequate proof of purchase date with a brief description of the defect. Florida Pneumatic will, at its option, repair or replace defective tools, free of charge. Repairs or replacements are warranted as described above for the remainder of the warranty period. Florida Pneumatic's sole liability and your exclusive remedy under this warranty is limited to repair or replacement of the defective tool. There are no other warranties expressed or implied and Florida Pneumatic shall not be liable for incidental, consequential or special damages, or any other damages, costs or expense of repair or replacement as described above.