

# PLEASE READ AND FOLLOW ALL WARNINGS



UT8965

POSITIVE CLUTCH SCREWDRIVER

## Read Operating Instructions

Always become familiar with all the instructions and warnings before operating any power tool.



## Always Wear Approved Eye Protection

Impact resistant eye protection should meet or exceed the standards as set forth in the United States ANSI Z87.1, Occupational and Educational Eye and Face Protection. Look for the marking Z87.1 on your eye protection to insure that it is an approved style. For further information, ANSI Z87.1, Occupational and Educational Eye and Face Protection, is available from the American National Standards Institute, Inc., 11 West 42nd Street, New York, NY 10036.



## Hearing Protection is Recommended

Hearing protection should be used when the noise level exposure equals or exceeds an 8 hour time-weighted average sound level of 85 dBA. Process noise, reflective surfaces, other tools being operated nearby, all add to the noise level present in your work area. If you are unable to determine your noise level exposure, we recommend the use of hearing protection.



## Avoid Prolonged Exposure to Vibration

Tools can vibrate during use. Prolonged exposure to vibration or very repetitive hand and arm movements, can cause injury. Stop using any tool if discomfort, tingling feeling or pain occurs. You should consult your physician before resuming use of the tool.



## 90 PSIG Maximum

This tool is designed to operate at

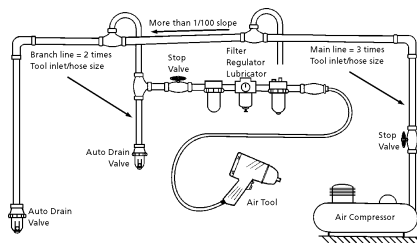
an air pressure of 90 pounds per square inch gauge pressure (90 PSIG) maximum, at the tool. Use of higher air pressure can, and may cause injury. Also, the use of higher air pressure places the internal components under loads and stresses they were not designed for, causing premature failure. The air supply should be clean and dry, preferably lubricated. For best results, drain the moisture from your compressor daily.

## WARNING:

Some dust created by power sanding, sawing, grinding, drilling, and other construction activities contains chemicals known to cause cancer, birth defects or reproductive harm. Some examples of these chemicals are:

- Lead from lead-based paints
- Crystalline silica from bricks, cement and other masonry products
- Arsenic and chromium from chemically treated lumber

Your risk from these exposures varies, depending on how often you do this type of work. To reduce your exposure to these chemicals, work in a well-ventilated area and work with approved safety equipment such as those dust masks that are specially designed to filter out microscopic particles.



## Description

The Universal Tool model UT8965 Positive Clutch is equipped with a 1/4" hexagonal quick change driver bit holder. Fully reversible with the flip of the lever makes this a quick and easy tool to use. Ideal for sheet metal, wood and self-tapping screws. Includes a 360° adjustable side handle to assist operator control, through handle exhaust to reduce noise and a variable trigger to make starting screws easier.



devices as furnished by the manufacturer. Where an air tool is modified or altered, the modifier shall provide the safeguards to enable it to be safely used in the operations intended and to comply with any applicable provisions as contained in ANSI B186.1.

## Safety Instructions

The following general instructions are furnished as general guidelines for use of your pneumatic tool. They cannot comprehensively cover all possible or conceivable uses of the subject tool. For additional information on the safe use of air tools, we advise you to obtain a copy of ANSI B186.1 Safety Code for Portable Air Tools, available from the following source:

American National Standards Institute, Inc.  
11 West 42nd Street  
New York, NY 10036.

The use of the word "shall" in the following instructions, indicates that adherence to the particular requirement is necessary to conform to ANSI B186.1.

## Tool Application and Usage

Portable tools shall be used only for the purposes intended in their design and within the capacity for which they were intended and rated. It shall be the tool owner's and/or employer's responsibility to instruct each operator in the safe use of the tool. Tools shall not be used without guards and safety

## Tool Installation

Pressure regulators shall be used to limit air pressure to the rated pressure where the supply pressure exceeds the tool's rated pressure. Air hoses and lines shall be relieved of compressed air before being disconnected or disjoined, unless there is automatic valve closing protection at the joint being separated. Synthetic lubricants which can cause deterioration of elastomer seals shall not be used in air systems of air tools.

## Tool Maintenance

It shall be the tool owner's and/or employer's responsibility to assure that tools are maintained in a safe operating condition. Tool maintenance and repair shall be performed by authorized, trained, competent personnel. Tools shall be disconnected from their compressed air supply before repairs are attempted. Repairs shall be consistent with the manufacturer's recommended procedures. Tool, hoses and fittings shall be replaced if unsuitable for safe operation. It shall be the tool owner's and/or employer's responsibility to keep required rating markings and warnings on the tool in legible condition.

Universal Tool  
A Division of Florida Pneumatic Manufacturing Corporation  
851 Jupiter Park Lane, Jupiter, Florida 33458  
Toll Free 1-800-327-9403

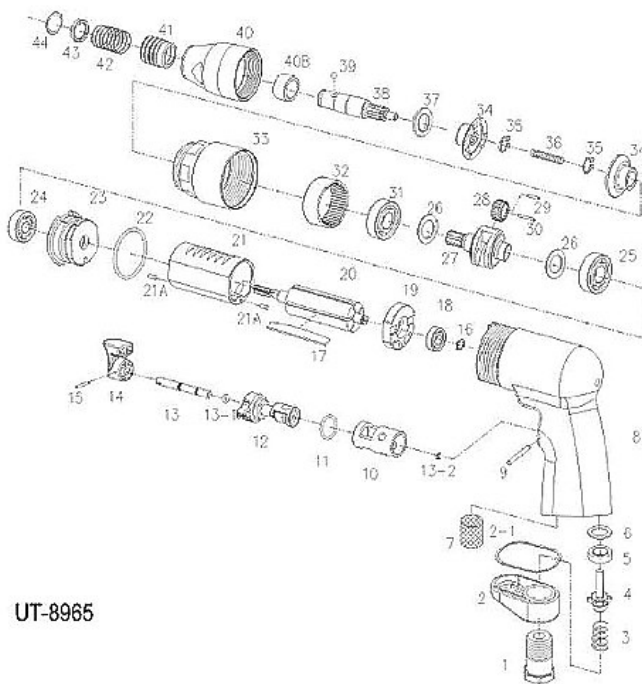
Read these instructions carefully before attempting to install, operate or service this Universal Tool product. Failure to comply with the instructions could result in personal injury and/or property damage! Retain these instructions for future reference.

FPMC

PL-0270

**Specifications**

Free speed .....	1,800 RPM
Bit retainer .....	1/4" Hex Quick Change
Maximum torque .....	65 in./lbS.
Weight .....	2.5lbs.
Overall length .....	8.5"
Average air consumption .....	4 CFM
Air inlet .....	1/4" NPT
Recommended hose size .....	3/8" I.D.
Maximum air pressure .....	90 PSI

**Parts Breakdown for UT8965**


UT-8965

**Replacement Parts**

Ref.	Description	Part #	Ref.	Description	Part #
1	Air Inlet	9389501	21A	Pin (2)	9389521A
2	Deflector	9389502	22	O'Ring	9389522
2-1	Gasket	9389502-1	23	Front Plate	9389523
3	Spring	9389503	24	Ball Bearing	9389524
4	Valve	9328804VN	25	Ball Bearing	9389525
5	Valve Seat	9328835N	26	Washer (2)	9389526
6	Spacer	9328825N	27	Gear Cage	9596527
7	Sliencer	9389507	28	Pinion Gear (2)	9389528
8	Housing	9389508	29	Needles (18)	9389529
9	Dowel Pin	9389509	30	Pin (2)	9389530
10	Valve Bushing	9389510	31	Ball Bearing	9389531
11	O-Ring	9389511	32	Ring Gear	9389532
12	Reverse Valve	9389512	33	Gear Case	9596533
13	Valve Stem	9389513	34	Clutch (2)	9596534
13-1	O-Ring	9287617	35	Retainer Ring (2)	9596535
13-2	Retainer	9389513-2	36	Spring	9596536
14	Trigger	9389514	37	Spacer	9589029N
15	Spring Pin	9389515	38	Spindle	9596538
16	Retainer	9389516	39	Steel Ball	9589046
17	Rotor Blades (5)	9389517	40	Clutch Case	9596540
18	Ball Bearing	9389518	40B	Anvil Bushing	9589028
19	Rear Plate	9389519	41	Bit Retainer Sleeve	9589031
20	Rotor	9389520	42	Spring	9589043
21	Cylinder	9389521R	43	Bit Washer	9589032
			44	Bit Ring	9589033

**Universal Tool's Limited Warranty**

Universal Tool warrants their tools to be free from defects in material and workmanship for one year from the date of purchase. This warranty does not apply to tools which have been abused, misused, modified or repaired by someone other than Universal Tool or their authorized service centers. If a Universal Tool proves defective in material or workmanship within one year after purchase, return it to any authorized service center or Universal Tool freight prepaid. Please enclose your name, address and adequate proof of purchase and a short description of the defect. Universal Tool will, at their option, repair or replace defective tools, free of charge. Repairs or replacements are warranted as described above for the remainder of the original warranty period. Universal Tool's sole liability and your exclusive remedy under this warranty is limited to repair or replacement of the defective tool. There are no other warranties expressed or implied and Universal Tool shall not be liable for incidental, consequential or special damages, or any other damages, costs or expense of repair or replacement as described above.

**Tool Operation and Maintenance**

- Daily, before putting tool into operation, disconnect air hose and pour 1/4 oz. of air tool oil into the air inlet.
- Blow out air line to clear it of accumulated dirt and moisture. Connect tool and operate momentarily to allow oil to be carried through tool.

- Hose runs longer than 8 feet should be connected to a 1/2" ID hose to provide sufficient volume for proper performance.
- We recommend oil made exclusively for air tools or equivalents which include moisture absorbants, rust inhibitors, metal wetting agents and an EP (extreme pressure) additive.