

PLEASE READ AND FOLLOW ALL WARNINGS



UT8962-11

**PUSH TO START
AUTO SHUTOFF SCREWDRIVER**

Read Operating Instructions

Always become familiar with all the instructions and warnings before operating any power tool.



Always Wear Approved Eye Protection

Impact resistant eye protection should meet or exceed the standards as set forth in the United States ANSI Z87.1, Occupational and Educational Eye and Face Protection. Look for the marking Z87.1 on your eye protection to insure that it is an approved style. For further information, ANSI Z87.1, Occupational and Educational Eye and Face Protection, is available from the American National Standards Institute, Inc., 11 West 42nd Street, New York, NY 10036.



Hearing Protection is Recommended

Hearing protection should be used when the noise level exposure equals or exceeds an 8 hour time-weighted average sound level of 85 dBA. Process noise, reflective surfaces, other tools being operated nearby, all add to the noise level present in your work area. If you are unable to determine your noise level exposure, we recommend the use of hearing protection.



Avoid Prolonged Exposure to Vibration

Tools can vibrate during use. Prolonged exposure to vibration or very repetitive hand and arm movements, can cause injury. Stop using any tool if discomfort, tingling feeling or pain occurs. You should consult your physician before resuming use of the tool.



90 PSIG Maximum

This tool is designed to operate at

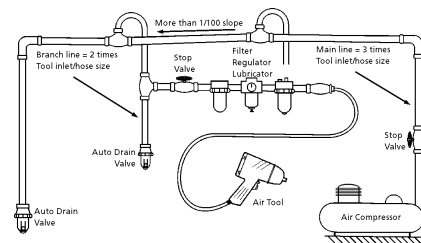
an air pressure of 90 pounds per square inch gauge pressure (90 PSIG) maximum, at the tool. Use of higher air pressure can, and may cause injury. Also, the use of higher air pressure places the internal components under loads and stresses they were not designed for, causing premature failure. The air supply should be clean and dry, preferably lubricated. For best results, drain the moisture from

WARNING:

Some dust created by power sanding, sawing, grinding, drilling, and other construction activities contains chemicals known to cause cancer, birth defects or reproductive harm. Some examples of these chemicals are:

- Lead from lead-based paints
- Crystalline silica from bricks, cement and other masonry products
- Arsenic and chromium from chemically treated lumber

Your risk from these exposures varies, depending on how often you do this type of work. To reduce your exposure to these chemicals, work in a well-ventilated area and work with approved safety equipment such as those dust masks that are specially designed to filter out microscopic particles.



Description

Universal Tool 1/4" QC screwdriver has an ergonomic handle design for reduced operator fatigue. Features a variable speed trigger and reverse for controlled operation. Ideal for general assembly and maintenance operation. The user now has the option of push to start operation by keeping the trigger depressed, or trigger start operation by depressing the trigger after the tool has been held against the fastener. Rotation of the fastener stops when the clutch reaches the set torque. Removing the tool from the fastener or releasing the trigger will reset the tool for the next cycle



Safety Instructions

The following instructions are furnished as general guidelines for use of your pneumatic tool. They cannot comprehensively cover all possible or conceivable uses of the subject tool. For additional information on the safe use of air tools, we advise you to obtain a copy of ANSI B186.1 Safety Code for Portable Air Tools, available from the following source:

American National Standards Institute, Inc.
11 West 42nd Street
New York, NY 10036.

The use of the word "shall" in the following instructions, indicates that adherence to the particular requirement is necessary to conform to ANSI B186.1.

Tool Application and Usage

Portable tools shall be used only for the purposes intended in their design and within the capacity for which they were intended and rated. It shall be the tool owner's and/or employer's responsibility to instruct each operator in the safe use of the tool. Tools shall not be used without guards and safety devices as furnished by the manufacturer. Where an air tool is modified or altered, the modifier shall

provide the safeguards to enable it to be safely used in the operations intended and to comply with any applicable provisions as contained in ANSI B186.1.

Tool Installation

Pressure regulators shall be used to limit air pressure to the rated pressure where the supply pressure exceeds the tool's rated pressure. Air hoses and lines shall be relieved of compressed air before being disconnected or disjointed, unless there is automatic valve closing protection at the joint being separated. Synthetic lubricants which can cause deterioration of elastomer seals shall not be used in air systems of air tools.

Tool Maintenance

It shall be the tool owner's and/or employer's responsibility to assure that tools are maintained in a safe operating condition. Tool maintenance and repair shall be performed by authorized, trained, competent personnel. Tools shall be disconnected from their compressed air supply before repairs are attempted. Repairs shall be consistent with the manufacturer's recommended procedures. Tool, hoses and fittings shall be replaced if unsuitable for safe operation. It shall be the tool owner's and/or employer's responsibility to keep required rating markings and warnings on the tool in legible condition.

Universal Tool
A Division of Florida Pneumatic Manufacturing Corporation
851 Jupiter Park Lane, Jupiter, Florida 33458
Toll Free 1-800-327-9403

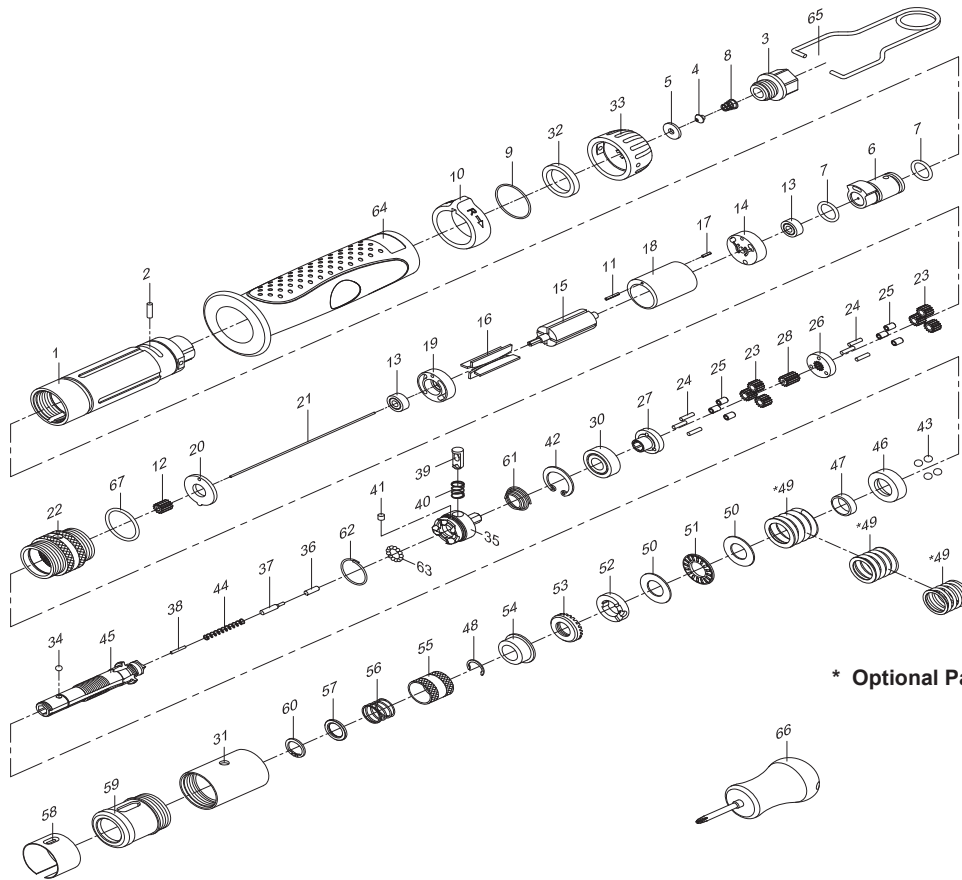
Read these instructions carefully before attempting to install, operate or service this Florida Pneumatic product. Failure to comply with the instructions could result in personal injury and/or property damage! Retain these instructions for future reference.

FPMC

Drive size1/4" QC
 Free speed (No load).....1100 RPM
 Torque (green spring)5-19 in/lbs.
 Torque (black spring) 10-38 in/lbs.
 Torque (yellow spring) 15-45 in/lbs.
 Weight1.5 lbs.
 Overall length8.65"
 Average air consumption4 CFM
 Recommended hose size3/8" I.D.
 Air inlet1/4" NPT
 Maximum operating pressure90 psi

Clutch Adjustment

Clutches are adjusted through the slot provided in the clutch housing. The slot cover must be rotated to expose the adjustment slot. Rotate (fig.58) the clutch housing until the hole in the adjustment nut is visible. Insert a No.1 Phillips screwdriver and rotate in a clockwise direction to increase torque setting or in a counter clockwise direction to decrease the setting. After each adjustment, the slot cover should be rotated back to its locked position



* Optional Parts

Replacement Parts for UT8962-1 1

Ref.	Part #	Description	Ref.	Part#	Description
1	9AS00501	MOTOR HOUSING	34	9000073	STEEL BALL (1/8")
2	961249	PIN	35	9000044	CLUTCH
3	9AS00503	AIR INLET	36	9000045	PIN (1/8"X9.6)
4	9AS00510	SHUT-OFF VALVE	37	9000046	RESET PIN
5	9AS00509	SHUT-OFF VALVE SEAT	38	9000047	PIN (1/16"X11)
6	9AS00530	REVERSE VALVE	39	9000048	TRIP SLIDE
7	9706107	O-RING (2)	40	9000049	SPRING
8	9AS00508	SHUT-OFF VALVE SPRING	41	9000050	PLUG
9	9OR02500100	O-RING	42	9000051	INTERNAL RING (RTW-22)
10	9AS00521	REVERSING VALVE KNOB	43	9000052	STEEL BALL (3/16") (4)
11	9000070	SPRING PIN (1.6X10)	44	9000053	SPRING
12	9AS00523	PINION GEAR (13T)	45	9000054	CAM SPINDLE
13	9000022	BALL BEARING (R3-ZZ) (2)	46	9000055	COVER
14	9000023	END PLATE	47	9000056	BUSHING
15	9AS00515	ROTOR	48	9000057	C-RING (5103-43)
16	9000025	ROTOR BLADE (4)	49	9000058	SPRING (Yellow)
17	9000026	SPRING PIN (1.5X6L)	49	9AS000149-12	SPRING (Black)
18	9000027	CYLINDER	49	9AS000149-13	SPRING (Green)
19	9000028	FRONT END PLATE	50	9000059	THRUST RACE (TRA-815) (2)
20	9AS00520	MOTOR SPACER	51	9000060	ROLLER THRUST BEARING
21	9AS10534	PUSH NEEDLE	52	9000061	ADJUSTMENT LOCK RING
22	9AS00522	INTERNAL GEAR	53	9000062	ADJUSTMENT NUT
23	9000038	PLANET GEAR (14T) (6)	54	9000063	SPINDLE BUSHING
24	9000033	PIN (3/32"X9.5) (6)	55	9000064	BALL RETAINER
25	9000034	BUSHING (6)	56	9000065	SPRING
26	9AS00526	REDUCTION SPINDLE	57	9000066	WASHER
27	9000036	WORK SPINDLE	58	9000067	ADJUSTMENT COVER
28	9000037	CENTER GEAR (13T)	59	9AS00059	CLUTCH HOUSING
30	9000039	BALL BEARING (77R6ZZ)	60	9000069	RETAINING RING(ISTW-11)
31	9AS00560	CLAMP NUT	61	9000097	SPRING
32	9AS00550	MUFFLER MATERIAL	62	9000071	RETAINER RING
33	9AS00507	EXHAUST DIFFUSER	63	9000072	STEEL BALL (3/32") (13)
			64	9AS00552	RUBBER GRIP
			65	9AS00562	HOOK
			66	9AS000163	SCREWDRIVER
			67	952235	O-RING

Limited Warranty

Universal Tool warrants its tools to be free from defects in material and workmanship for one year from the date of purchase. This warranty does not apply to tools which have been abused, misused, modified or repaired by someone other than Universal Tool or its authorized service centers. If a Universal Tool proves defective in material or workmanship within one year after purchase, return it to any authorized service center or to Universal Tool, freight prepaid. Please enclose your name, address and adequate proof of purchase date with a brief description of the defect. Universal Tool will, at its option, repair or replace defective tools, free of charge. Repairs or replacements are warranted as described above for the remainder of the warranty period. Universal Tool's sole liability and your exclusive remedy under this warranty is limited to repair or replacement of the defective tool. There are no other warranties expressed or implied and Universal Tool shall not be liable for incidental, consequential or special damages, or any other damages, costs or expense of repair or replacement as described above.