



**PLEASE READ AND FOLLOW ALL WARNINGS**



**Universal Tool**

**UT8961-1 Lever Start  
Auto Shut-Off Angle Screwdriver**

**Read Operating Instructions**

Always become familiar with all the instructions and warnings before operating any power tool.

**Always Wear Approved**

**Eye Protection**

Impact resistant eye protection should meet or exceed the standards as set forth in the United States ANSI Z87.1, Occupational and Educational Eye and Face Protection. Look for the marking Z87.1 on your eye protection to insure that it is an approved style. For further information, ANSI Z87.1,

Occupational and Educational Eye and Face Protection, is available from the American National Standards Institute, Inc., 11 West 42nd Street, New York, NY 10036.

**Hearing Protection is Recommended**

Hearing protection should be used when the noise level exposure equals or exceeds an 8 hour time-weighted average sound level of 85 dBA. Process noise, reflective surfaces, other tools being operated nearby, all add to the noise level present in your work area. If you are unable to determine your noise level exposure, we recommend the use of hearing protection.

**Avoid Prolonged Exposure to Vibration**

Tools can vibrate during use. Prolonged exposure to vibration or very repetitive hand and arm movements, can cause injury. Stop using any tool if discomfort, tingling feeling or pain occurs. You should consult your physician before resuming use of the tool.

**90 PSIG Maximum**

This tool is designed to operate at

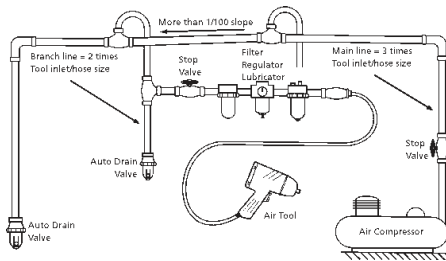
an air pressure of 90 pounds per square inch gauge pressure (90 PSIG) maximum, at the tool. Use of higher air pressure can, and may cause injury. Also, the use of higher air pressure places the internal components under loads and stresses they were not designed for, causing premature failure. The air supply should be clean and dry, preferably lubricated. For best results, drain the moisture from your compressor daily.

**WARNING:**

Some dust created by power sanding, sawing, grinding, drilling, and other construction activities contains chemicals known to cause cancer, birth defects or reproductive harm. Some examples of these chemicals are:

- Lead from lead-based paints
- Crystalline silica from bricks, cement and other masonry products
- Arsenic and chromium from chemically treated lumber

Your risk from these exposures varies, depending on how often you do this type of work. To reduce your exposure to these chemicals, work in a well-ventilated area and work with approved safety equipment such as those dust masks that are specially designed to filter out microscopic particles.



- Rear exhaust.
- Rugged Steel Angle Head – Overall Height
- Thumb operated reverse switch.
- Built-in suspension bail.
- Built-in comfort grip.
- Easy to adjust Clutch.



**Safety Instructions**

The following instructions are furnished as general guidelines for use of your pneumatic tool. They cannot comprehensively cover all possible or conceivable uses of the subject tool. For additional information on the safe use of air tools, we advise you to obtain a copy of CAGI B186.1-2009 Safety Code for Portable Air Tools, available from the following source: COMPRESSED AIR AND GAS INSTITUTE 1300 Sumner Avenue Cleveland, OH 44115-2851 Ph: 216-241-7333 www.cagi.org OR from Florida Pneumatic Manufacturing Corp. 851 Jupiter Park Lane Jupiter, FL 33458 561-744-9500 www.florida-pneumatic.com The use of the word "shall" in the following instructions, indicates that adherence to the particular requirement is necessary to conform to CAGI B186.1-2009.

**Tool Application and Usage**

Portable tools shall be used only for the purposes intended in their design and within the capacity for which they were intended and rated. It shall be the tool owner's and/or employer's responsibility to instruct each operator in the safe use of the tool. Tools shall not be used without guards and safety

devices as furnished by the manufacturer. Where an air tool is modified or altered, the modifier shall provide the safeguards to enable it to be safely used in the operations intended and to comply with any applicable provisions as contained in CAGI B186.1-2009.

**Tool Installation**

Pressure regulators shall be used to limit air pressure to the rated pressure where the supply pressure exceeds the tool's rated pressure. Air hoses and lines shall be relieved of compressed air before being disconnected or disjoined, unless there is automatic valve closing protection at the joint being separated. Synthetic lubricants which can cause deterioration of elastomer seals shall not be used in air systems of air tools.

**Tool Maintenance**

It shall be the tool owner's and/or employer's responsibility to assure that tools are maintained in a safe operating condition. Tool maintenance and repair shall be performed by authorized, trained, competent personnel. Tools shall be disconnected from their compressed air supply before repairs are attempted. Repairs shall be consistent with the manufacturer's recommended procedures. Tool, hoses and fittings shall be replaced if unsuitable for safe operation. It shall be the tool owner's and/or employer's responsibility to keep required rating markings and warnings on the tool in legible condition.

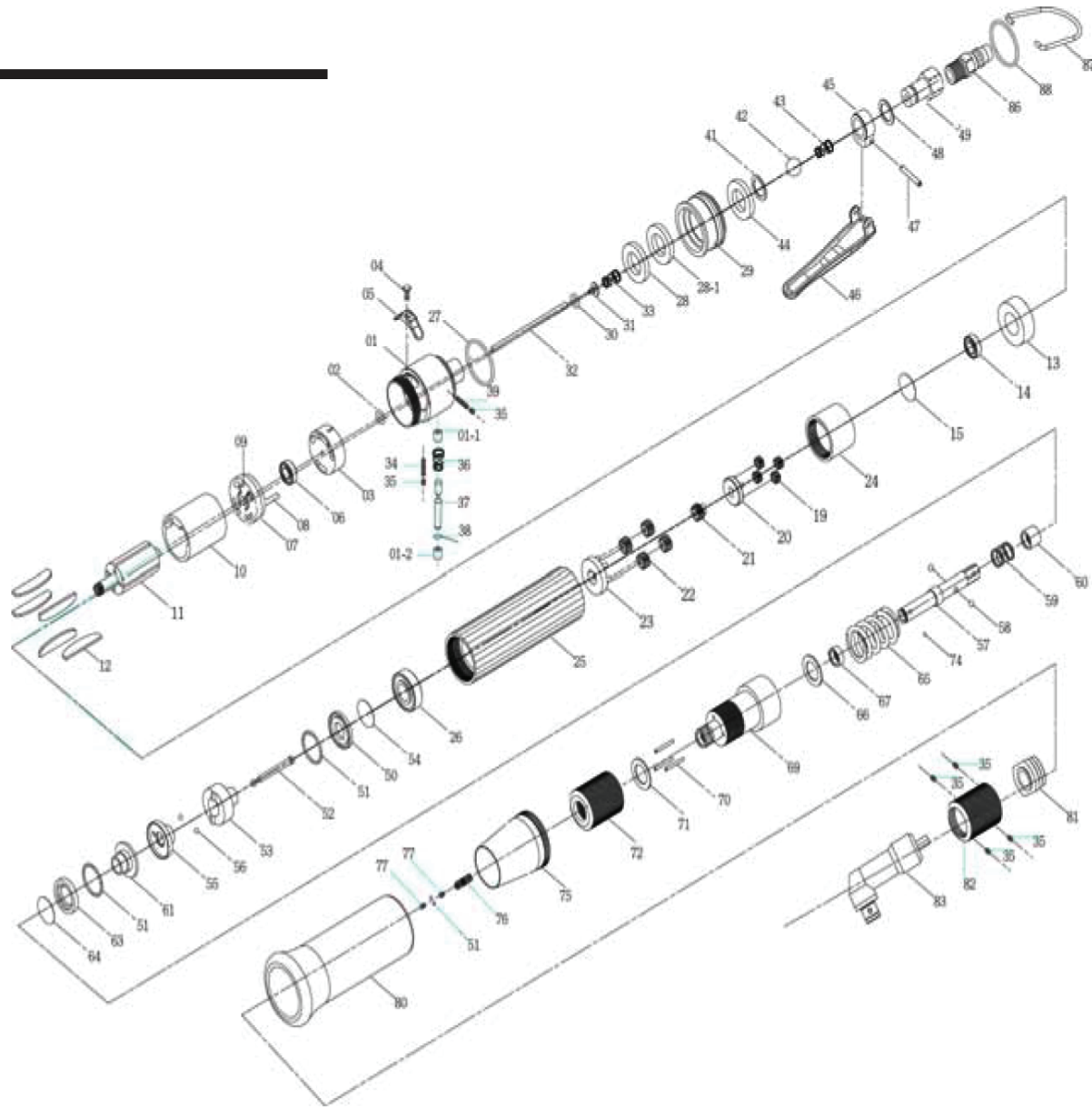
Universal Tool a Division of Florida Pneumatic Manufacturing Corporation  
851 Jupiter Park Lane, Jupiter, Florida 33458  
Toll Free 1-800-327-9403

*Read these instructions carefully before attempting to install, operate or service this Florida Pneumatic product. Failure to comply with the instructions could result in personal injury and/or property damage! Retain these instructions for future reference.*

**FPMC**

Ref No	Part No	Description
1	5A6002	End Housing
1-1	2S3010	Inner Bushing
1-2	2S6001	Outer Bushing
2	2Q5001	O Ring (2)
3	2P6000	Valve
4	7S2100	Set Screw And Washer
5	2L6010	Switch
6	7S5001	Ball Bearing
7	1S6001	End Plate
8	7S5203	Roll Pin
9	7S5201	Roll Pin (2)
10	1P6005	Cylinder
12	1P6051	Blade (6)
13	1P3012	Front Plate
14	7S2002	Ball Bearing
15	6N2020	C Ring
16	1S6046	Rotor
18	1P2274	First Main Gear
19	1P2110	First Plant Gear (8)
20	1P2280	First Gear Cage (2)
21	1P2270	Second Main Gear
23-A	1P2091	Third Main Gear
23-B	1P2132	Third Plant Gear (4)
23-C	1P2289	Third Gear Cage
24	1S6061	Internal Gear
24-1	1S6063	Internal Gear
25	5A6000	Center Housing
26	7S6003	Ball Bearing
27	2Q2003	O-Ring
28	2P3021	First Silencer
29	2A6001	Exhaust Deflector
30	7Q2006	O Ring
31	6S2021	Valve Plate
32	6S2005	Operating Rod
33	6N2104	Cone Spring
34	6S2030	Screw
35	7S2113	Screw (2)
36	6N5113	Spring
37	2S5020	Valve Pin
38	7Q6112	Valve O-Ring

Ref No	Part No	Description
39	6S2030-1	Screw
41	7Q6100	O Ring
42	7S2103	Ball
43	6N2105	Spring
44	2P3010	Second Silencer
45	5A2002	Lever Set
46	5L6102	Lever
47	7S2202	Roll Pin
49	2S2010	Air Inlet Bushing (Pt)
50	2S6103	Retainer
51	7S2102	Ball (59)
52	3S5001	Pilot Pin
53	3S5212	Rear Clutch
54	6N2006	C Ring (2)
55	3S5217	Center Clutch
56	7S2112	Ball (2)
57	3S5036	Anvil (6.35Hex)
58	7S2105	Ball (2)
59	6N5110	Spring
60	3S2227	Slide Base
61	3S5221	End Clutch
63	3S5231	Ball Race
65	6N3007	Torque Spring
66	7S5121	Washer
67	3S2113	Bushing
69	3S6122	Angle Clutch Housing
70	6S2011	Needle Pin (3)
72	3A6007	Torque Ring
74	7S3107	Ball
75	5A6506	Torque Cover
76	6N6001	Spring
77	7S2111	Screw (2)
80	5L6010	Soft Cover
82	6S2008	Angle Lock Nut
83	5C2005	Angle Head Assembly
84	7S5111	Screw (4)
86	2U3002	Air House Nipple
87	5N2002	Suspension Ring
88	5L2023	Color Ring



Universal Tool warrants its tools to be free from defects in material and workmanship for one year from the date of purchase. This warranty does not apply to tools which have been abused, misused, modified or repaired by someone other than Universal Tool or its authorized service centers. If a Universal Tool proves defective in material or workmanship within one year after purchase, return it to any authorized service center or to Universal Tool, freight prepaid. Please enclose your name, address and adequate proof of purchase date with a brief description of the defect. Universal Tool will, at its option, repair or replace defective tools, free of charge. Repairs or replacements are warranted as described above for the remainder of the warranty period. Universal Tool's sole liability and your exclusive remedy under this warranty is limited to repair or replacement of the defective tool. There are no other warranties expressed or implied and Universal Tool shall not be liable for incidental, consequential or special damages, or any other damages, costs or expense of repair or replacement as described above.

### Specifications

Free Speed	300 RPM
Torque range	26-160
Motor	0.5 HP
Drive Size	1/4" Int. Hex
Exhaust	Rear
Weight	2.6 lbs.
Length	13.1 in.
Air Conspr.	4.0 CFM