



PLEASE READ AND FOLLOW ALL WARNINGS



Universal Tool

**UT8960-1 Lever Start
Auto Shut-Off Angle Screwdriver**

Read Operating Instructions

Always become familiar with all the instructions and warnings before operating any power tool.

Always Wear Approved Eye Protection

Impact resistant eye protection should meet or exceed the standards as set forth in the United States ANSI Z87.1, Occupational and Educational Eye and Face Protection. Look for the marking Z87.1 on your eye protection to insure that it is an approved style. For further information, ANSI Z87.1, Occupational and Educational Eye and Face Protection, is available from the American National Standards Institute, Inc., 11 West 42nd Street, New York, NY 10036.

Hearing Protection is Recommended

Hearing protection should be used when the noise level exposure equals or exceeds an 8 hour time-weighted average sound level of 85 dBA. Process noise, reflective surfaces, other tools being operated nearby, all add to the noise level present in your work area. If you are unable to determine your noise level exposure, we recommend the use of hearing protection.

Avoid Prolonged Exposure to Vibration

Tools can vibrate during use. Prolonged exposure to vibration or very repetitive hand and arm movements, can cause injury. Stop using any tool if discomfort, tingling feeling or pain occurs. You should consult your physician before resuming use of the tool.

90 PSIG Maximum

This tool is designed to operate at

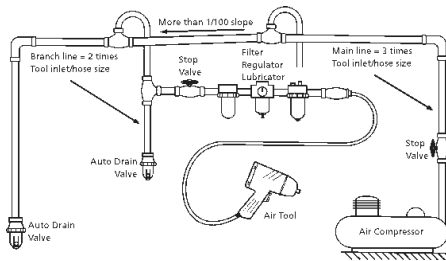
an air pressure of 90 pounds per square inch gauge pressure (90 PSIG) maximum, at the tool. Use of higher air pressure can, and may cause injury. Also, the use of higher air pressure places the internal components under loads and stresses they were not designed for, causing premature failure. The air supply should be clean and dry, preferably lubricated. For best results, drain the moisture from your compressor daily.

WARNING:

Some dust created by power sanding, sawing, grinding, drilling, and other construction activities contains chemicals known to cause cancer, birth defects or reproductive harm. Some examples of these chemicals are:

- Lead from lead-based paints
- Crystalline silica from bricks, cement and other masonry products
- Arsenic and chromium from chemically treated lumber

Your risk from these exposures varies, depending on how often you do this type of work. To reduce your exposure to these chemicals, work in a well-ventilated area and work with approved safety equipment such as those dust masks that are specially designed to filter out microscopic particles.



- Rear exhaust.
- Rugged Steel Angle Head – Overall Height 1-5/8”.
- Thumb operated reverse switch.
- Built-in suspension bail.
- Built-in comfort grip.
- Easy to adjust Clutch.



Safety Instructions

The following instructions are furnished as general guidelines for use of your pneumatic tool. They cannot comprehensively cover all possible or conceivable uses of the subject tool. For additional information on the safe use of air tools, we advise you to obtain a copy of CAGI B186.1-2009 Safety Code for Portable Air Tools, available from the following source: COMPRESSED AIR AND GAS INSTITUTE 1300 Sumner Avenue Cleveland, OH 44115-2851 Ph: 216-241-7333 www.cagi.org OR from Florida Pneumatic Manufacturing Corp. 851 Jupiter Park Lane Jupiter, FL 33458 561-744-9500 www.florida-pneumatic.com The use of the word “shall” in the following instructions, indicates that adherence to the particular requirement is necessary to conform to CAGI B186.1-2009.

Tool Application and Usage

Portable tools shall be used only for the purposes intended in their design and within the capacity for which they were intended and rated. It shall be the tool owner’s and/or employer’s responsibility to instruct each operator in the safe use of the tool. Tools shall not be used without guards and safety

devices as furnished by the manufacturer. Where an air tool is modified or altered, the modifier shall provide the safeguards to enable it to be safely used in the operations intended and to comply with any applicable provisions as contained in CAGI B186.1-2009 .

Tool Installation

Pressure regulators shall be used to limit air pressure to the rated pressure where the supply pressure exceeds the tool’s rated pressure. Air hoses and lines shall be relieved of compressed air before being disconnected or disjoined, unless there is automatic valve closing protection at the joint being separated. Synthetic lubricants which can cause deterioration of elastomer seals shall not be used in air systems of air tools.

Tool Maintenance

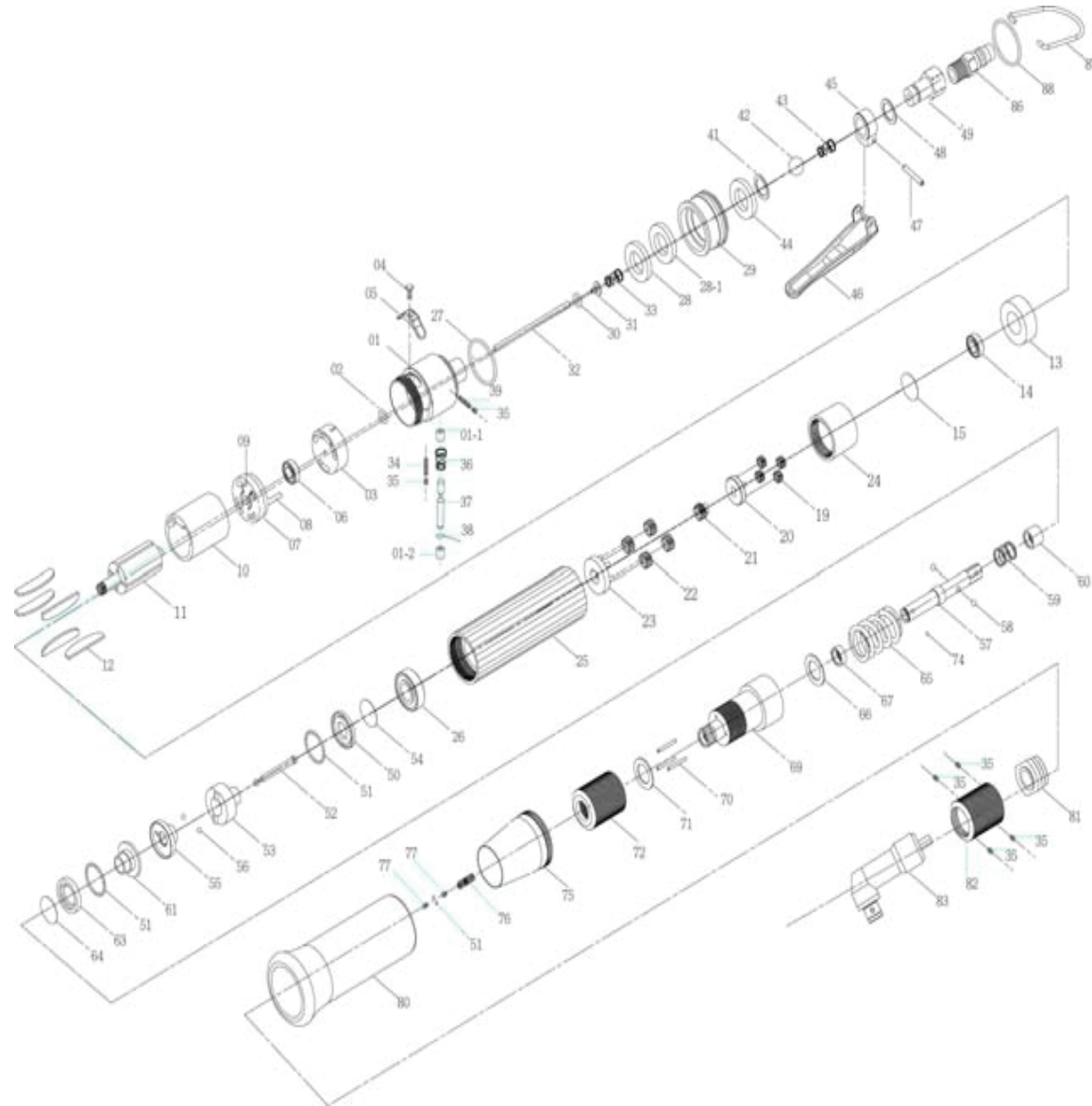
It shall be the tool owner’s and/or employer’s responsibility to assure that tools are maintained in a safe operating condition. Tool maintenance and repair shall be performed by authorized, trained, competent personnel. Tools shall be disconnected from their compressed air supply before repairs are attempted. Repairs shall be consistent with the manufacturer’s recommended procedures. Tool, hoses and fittings shall be replaced if unsuitable for safe operation. It shall be the tool owner’s and/or employer’s responsibility to keep required rating markings and warnings on the tool in legible condition.

Universal Tool a Division of Florida Pneumatic Manufacturing Corporation
851 Jupiter Park Lane, Jupiter, Florida 33458
Toll Free 1-800-327-9403

Read these instructions carefully before attempting to install, operate or service this Florida Pneumatic product. Failure to comply with the instructions could result in personal injury and/or property damage! Retain these instructions for future reference.



Ref No	Part No	Description	Ref No	Part No	Description
1	5A3005	End Housing	42	7S2109	Ball
1-1	2S3010	Inner Bushing	43	6N2105	Spring
1-2	2S3001	Outer Bushing	44	2P3020	Second Silencer
2	7Q2005	O Ring	45	5A2001	Lever Set
3	2P3000	Valve	46	5L3102	Lever
4	7S2100	Set Screw And Washer	47	7S2202	Roll Pin
5	2L3010	Switch	48	2Q5001	O Ring
6	7S2001	Ball Bearing	49	2S2010	Air Inlet Bushing (Pt)
7	1S3001	End Plate	50	2S2103	Retainer
8	6S2016	Roll Pin	51	7S2102	Ball (52)
9	6S2013	Roll Pin	52	3S2001	Pilot Pin
10	1P3005	Cylinder	53	3S2211	Rear Clutch
11	1S3040	Rotor	54	6N2006	C Ring
12	1P3050	Blade (5)	55	3S2215	Center Clutch
13	1P3060	Front Plate	56	7S2112	Ball (2)
14	7S2002	Ball Bearing	57	3S7035	Anvil (6.35Hex)
15	6N2020	C Ring	58	7S2105	Ball (2)
19	1P2101	First Plant Gear (4)	59	6N2110	Spring
20	1P3280	First Gear Cage	60	3S2226	Slide Base
21	1P2090	Second Main Gear	61	3S2222	End Clutch
22	1P2130	Second Plant Gear (4)	63	3S2231	Ball Race
23	1P2285	Second Gear Cage	64	6N3100	C Ring
24	1S2061	Internal Gear	65	6N3004	Torque Spring
25	5A3000	Center Housing	66	2S7121	Washer
26	7S5003	Ball Bearing	67	3S2119	Bushing
27	7Q2015	O Ring	69	3S3120	Angle Clutch Housing
28	2S2104	Washer	70	6S2010	Needle Pin (3)
28-1	2P3010	First Silencer	71	3S3101	Regulation Washer
29	2A3001	Exhaust Deflector	72	3S3002	Torque Ring
30	7Q2007	O Ring	74	7S3107	Ball
31	6S2020	Valve Plate	75	5A3203	Torque Cover
32	6S2004	Operating Rod	76	6N3102	Spring
33	6N2101	Cone Spring	77	7S2111	Screw (2)
34	6S2031	Screw	80	5L3010	Soft Cover
35	7S2113	Screw (6)	81	5S2020	Housing Set
36	2N2101	Spring	82	5S2010	Angle Lock Nut
37	2S2021	Valve Pin	83	5C2001	Angle Head Assembly
38	7Q2003	Valve O-Ring	86	2U3002	Air House Nipple
39	6S2031-1	Screw	87	5N2002	Suspension Ring
41	7Q6100	O Ring	88	5L2023	Color Ring



Universal Tool warrants its tools to be free from defects in material and workmanship for one year from the date of purchase. This warranty does not apply to tools which have been abused, misused, modified or repaired by someone other than Universal Tool or its authorized service centers. If a Universal Tool proves defective in material or workmanship within one year after purchase, return it to any authorized service center or to Universal Tool, freight prepaid. Please enclose your name, address and adequate proof of purchase date with a brief description of the defect. Universal Tool will, at its option, repair or replace defective tools, free of charge. Repairs or replacements are warranted as described above for the remainder of the warranty period. Universal Tool's sole liability and your exclusive remedy under this warranty is limited to repair or replacement of the defective tool. There are no other warranties expressed or implied and Universal Tool shall not be liable for incidental, consequential or special damages, or any other damages, costs or expense of repair or replacement as described above.

Specifications

Model	Free Speed	Torque Range	Motor	Drive Size	Exhaust	Weight	Length	Air Cons
Number	(RPM)	(in-lb)	HP			(lbs)	(In.)	(CFM)
UT8960	1000	5-25	0.4	¼" int. hex	rear	1.45	10.6	4.0