

PLEASE READ AND FOLLOW ALL WARNINGS

Read Operating Instructions

Always become familiar with all the instructions and warnings before operating any power tool.



Always Wear Approved Eye Protection

Impact resistant eye protection should meet or exceed the standards as set forth in the United States ANSI Z87.1, Occupational and Educational Eye and Face Protection. Look for the marking Z87.1 on your eye protection to insure that it is an approved style. For further information, ANSI Z87.1, Occupational and Educational Eye and Face Protection, is available from the American National Standards Institute, Inc., 11 West 42nd Street, New York, NY 10036.



Hearing Protection is Recommended

Hearing protection should be used when the noise level exposure equals or exceeds an 8 hour time-weighted average sound level of 85 dBA. Process noise, reflective surfaces, other tools being operated nearby, all add to the noise level present in your work area. If you are unable to determine your noise level exposure, we recommend the use of hearing protection.



Avoid Prolonged Exposure to Vibration

Tools can vibrate during use. Prolonged exposure to vibration or very repetitive hand and arm movements, can cause injury. Stop using any tool if discomfort, tingling feeling or pain occurs. You should consult your physician before resuming use of the tool.



90 PSIG Maximum

This tool is designed to operate at

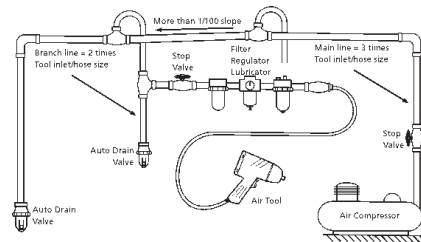
an air pressure of 90 pounds per square inch gauge pressure (90 PSIG) maximum, at the tool. Use of higher air pressure can, and may cause injury. Also, the use of higher air pressure places the internal components under loads and stresses they were not designed for, causing premature failure. The air supply should be clean and dry, preferably lubricated. For best results, drain the moisture from your compressor daily.

WARNING:

Some dust created by power sanding, sawing, grinding, drilling, and other construction activities contains chemicals known to cause cancer, birth defects or reproductive harm. Some examples of these chemicals are:

- Lead from lead-based paints
- Crystalline silica from bricks, cement and other masonry products
- Arsenic and chromium from chemically treated lumber

Your risk from these exposures varies, depending on how often you do this type of work. To reduce your exposure to these chemicals, work in a well-ventilated area and work with approved safety equipment such as those dust masks that are specially designed to filter out microscopic particles.



Description

Universal Tool straight handle adjustable clutch screwdriver is equipped with a 1/4" hexagonal bit quick change holder. Fully reversible with the push of a button makes this a quick and easy tool to use which is ideal for sheet metal, wood and self-tapping screws.



Safety Instructions

The following instructions are furnished as general guidelines for use of your pneumatic tool. They cannot comprehensively cover all possible or conceivable uses of the subject tool. For additional information on the safe use of air tools, we advise you to obtain a copy of ANSI B186.1 Safety Code for Portable Air Tools, available from the following source:

American National Standards Institute, Inc.
11 West 42nd Street
New York, NY 10036.

The use of the word "shall" in the following instructions, indicates that adherence to the particular requirement is necessary to conform to ANSI B186.1.

Tool Application and Usage

Portable tools shall be used only for the purposes intended in their design and within the capacity for which they were intended and rated. It shall be the tool owner's and/or employer's responsibility to instruct each operator in the safe use of the tool. Tools shall not be used without guards and safety

devices as furnished by the manufacturer. Where an air tool is modified or altered, the modifier shall provide the safeguards to enable it to be safely used in the operations intended and to comply with any applicable provisions as contained in ANSI B186.1.

Tool Installation

Pressure regulators shall be used to limit air pressure to the rated pressure where the supply pressure exceeds the tool's rated pressure. Air hoses and lines shall be relieved of compressed air before being disconnected or disjoined, unless there is automatic valve closing protection at the joint being separated. Synthetic lubricants which can cause deterioration of elastomer seals shall not be used in air systems of air tools.

Tool Maintenance

It shall be the tool owner's and/or employer's responsibility to assure that tools are maintained in a safe operating condition. Tool maintenance and repair shall be performed by authorized, trained, competent personnel. Tools shall be disconnected from their compressed air supply before repairs are attempted. Repairs shall be consistent with the manufacturer's recommended procedures. Tool, hoses and fittings shall be replaced if unsuitable for safe operation. It shall be the tool owner's and/or employer's responsibility to keep required rating markings and warnings on the tool in legible condition.

Universal Tool
A Division of Florida Pneumatic Manufacturing Corporation
851 Jupiter Park Lane, Jupiter, Florida 33458
Toll Free 1-800-327-9403

Read these instructions carefully before attempting to install, operate or service this Florida Pneumatic product. Failure to comply with the instructions could result in personal injury and/or property damage! Retain these instructions for future reference.

FPMC



Universal Tool

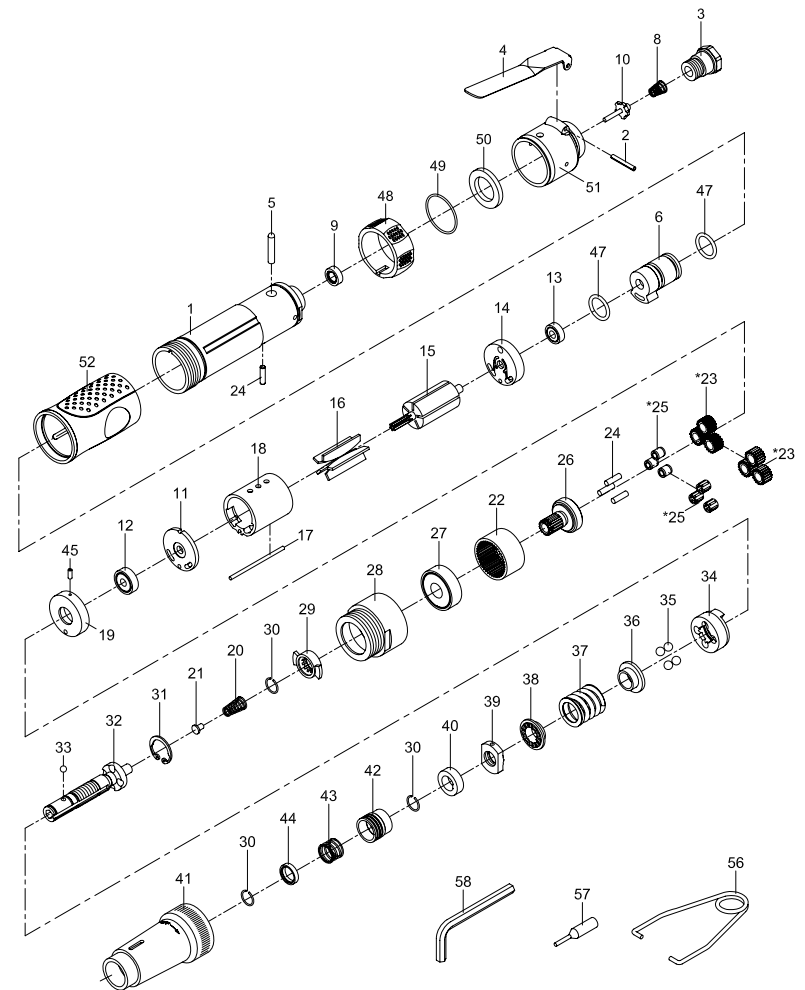
ADJUSTABLE BALL CLUTCH SCREWDRIVER

UT8955-1

Specifications

Clutch type	Externally adjustable
Free speed	1,800 RPM
Bit retainer	1/4" Hex Quick Change
Torque Range	45-115 in./lbs.
Weight	2.42 lbs.
Overall length	10"
Average air consumption	4 CFM
Air inlet	1/4" NPT
Recommended hose size	3/8" I.D.
Maximum air pressure	90 PSI

*Q.C = Quick Change



INSTRUCTIONS FOR ADJUSTING CLUTCH:

1. Slide retaining sleeve on clutch housing to expose adjustment nut. (ref. 52)
2. Insert #2 phillip screwdriver into slot between adjustment nut and plate.
3. To increase torque setting, turn screwdriver clockwise. This action will rotate the adjustment nut to shorten spring length and tighten spring. This increase torque.
4. To decrease torque setting, turn screwdriver counter clockwise. This action will rotate the adjustment nut to lengthen the spring and loosen the spring. This decreases torque.
5. Remove screwdriver and slide retaining sleeve over exposed area to keep foreign objects from entering clutch assembly.

Limited Warranty

Universal Tool warrants its tools to be free from defects in material and workmanship for one year from the date of purchase. This warranty does not apply to tools which have been abused, misused, modified or repaired by someone other than Universal Tool or its authorized service centers. If a Universal Tool proves defective in material or workmanship within one year after purchase, return it to any authorized service center or to Universal Tool, freight prepaid. Please enclose your name, address and adequate proof of purchase date with a brief description of the defect. Universal Tool will, at its option, repair or replace defective tools, free of charge. Repairs or replacements are warranted as described above for the remainder of the warranty period. Universal Tool's sole liability and your exclusive remedy under this warranty is limited to repair or replacement of the defective tool. There are no other warranties expressed or implied and Universal Tool shall not be liable for incidental, consequential or special damages, or any other damages, costs or expense of repair or replacement as described above.

REF. NO	PARTS NO.	DESCRIPTION	Q'TY	REF. NO	PARTS NO.	DESCRIPTION	Q'TY
1	979-842301	Motor Housing	1	28	980228	Clamp Nut	1
2	950102	Spring Pin	1	29	980229	Drive Dog	1
3	982-842103	Air Inlet	1	30	980230	Retaining Ring	3
4	984204-1	Throttle Lever	1	31	980231	Retaining Ring	1
5	960-601105	Pin	1	32	980232	Cam Spindle	1
6	982-842206	Reverse Valve	1	33	940145	Steel Ball	1
8	95J-842308	Spring	1	34	980234	Clutch Carrier	1
9	975-725145	Rubber Spacer	1	35	980235	Steel Ball	4
10	975-725146	Valve Stem	1	36	980236	Washer	1
11	980214	End Plate	1	37	9802F37	Spring	1
12	9030113	Ball Bearing	1	38	980238	Washer	1
13	9052213	Ball Bearing	1	39	9802F39	Adjust Nut	1
14	982-842214	Rear End Plate	1	40	980240	Spacer	1
15	980215-12	Rotor	1	41	982-8422F41	Clutch Housing	1
16	980216	Rotor Blade	5	42	980242	Ball Retainer	1
17	980217-13	Pin	1	43	980243	Spring	1
18	980218-22	Cylinder	1	44	980244	Washer	1
19	975-725119	Front End Plate	1	45	970117	Spring Pin	1
20	980220	Spring	1	47	9795847	O-Ring	2
21	980221	Spring Guide	1	48	95J-842321	Reversing Valve Knob	1
22	980222	Internal Gear	1	49	90R03100105	O-Ring	1
*23	980223-11	Planet Gear	3	50	982-842250	Muffler Material	1
	980223-14	Planet Gear	3	51	95J-842353	Rear Cover	1
24	930124	Pin	4	52	982-842252	Rubber Grip	1
*25	980225	Bushing	3	56	982-842257	Hook	1
	980245	Needle Bearing	3	57	9600324	Key	1
26	980226	Work Spindle	1	58	910022	Hex. Wrench	1
27	980227	Ball Bearing	1				

* Optional Parts