

PLEASE READ AND FOLLOW ALL WARNINGS



UT8860R-1

3/8" 1,800 RPM REVERSIBLE ANGLE DRILL

Read Operating Instructions

Always become familiar with all the instructions and warnings before operating any power tool.

Always Wear Approved Eye Protection

Impact resistant eye protection should meet or exceed the standards as set forth in the United States ANSI Z87.1, Occupational and Educational Eye and Face Protection. Look for the marking Z87.1 on your eye protection to insure that it is an approved style. For further information, ANSI Z87.1, Occupational and Educational Eye and Face Protection, is available from the American National Standards Institute, Inc., 11 West 42nd Street, New York, NY 10036.

Hearing Protection is Recommended

Hearing protection should be used when the noise level exposure equals or exceeds an 8 hour time-weighted average sound level of 85 dBA. Process noise, reflective surfaces, other tools being operated nearby, all add to the noise level present in your work area. If you are unable to determine your noise level exposure, we recommend the use of hearing protection.

Avoid Prolonged Exposure to Vibration

Tools can vibrate during use. Prolonged exposure to vibration or very repetitive hand and arm movements, can cause injury. Stop using any tool if discomfort, tingling feeling or pain occurs. You should consult your physician before resuming use of the tool.

90 PSIG Maximum

This tool is designed to operate at

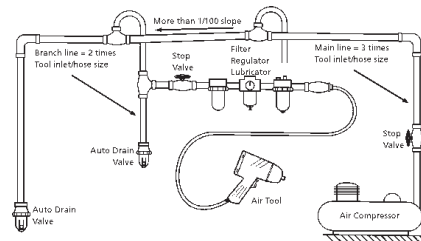
an air pressure of 90 pounds per square inch gauge pressure (90 PSIG) maximum, at the tool. Use of higher air pressure can, and may cause injury. Also, the use of higher air pressure places the internal components under loads and stresses they were not designed for, causing premature failure. The air supply should be clean and dry, preferably lubricated. For best results, drain the moisture from your compressor daily.

WARNING:

Some dust created by power sanding, sawing, grinding, drilling, and other construction activities contains chemicals known to cause cancer, birth defects or reproductive harm. Some examples of these chemicals are:

- Lead from lead-based paints
- Crystalline silica from bricks, cement and other masonry products
- Arsenic and chromium from chemically treated lumber

Your risk from these exposures varies, depending on how often you do this type of work. To reduce your exposure to these chemicals, work in a well-ventilated area and work with approved safety equipment such as those dust masks that are specially designed to filter out microscopic particles.



Description

Universal Tool 3/8" right angle air drill is designed for heavy duty drilling and assembly applications. The right angle head allows access to hard to reach areas for reaming, drilling, honing and wire brushing. Reversible direction button is easily accessible during operation. Features rear exhaust to direct air away from work surface and all ball bearing construction for long life.



Safety Instructions

The following instructions are furnished as general guidelines for use of your pneumatic tool. They cannot comprehensively cover all possible or conceivable uses of the subject tool. For additional information on the safe use of air tools, we advise you to obtain a copy of ANSI B186.1 Safety Code for Portable Air Tools, available from the following source:

American National Standards Institute, Inc.
11 West 42nd Street
New York, NY 10036.

The use of the word "shall" in the following instructions, indicates that adherence to the particular requirement is necessary to conform to ANSI B186.1.

Tool Application and Usage

Portable tools shall be used only for the purposes intended in their design and within the capacity for which they were intended and rated. It shall be the tool owner's and/or employer's responsibility to instruct each operator in the safe use of the tool. Tools shall not be used without guards and safety

devices as furnished by the manufacturer. Where an air tool is modified or altered, the modifier shall provide the safeguards to enable it to be safely used in the operations intended and to comply with any applicable provisions as contained in ANSI B186.1.

Tool Installation

Pressure regulators shall be used to limit air pressure to the rated pressure where the supply pressure exceeds the tool's rated pressure. Air hoses and lines shall be relieved of compressed air before being disconnected or disjoined, unless there is automatic valve closing protection at the joint being separated. Synthetic lubricants which can cause deterioration of elastomer seals shall not be used in air systems of air tools.

Tool Maintenance

It shall be the tool owner's and/or employer's responsibility to assure that tools are maintained in a safe operating condition. Tool maintenance and repair shall be performed by authorized, trained, competent personnel. Tools shall be disconnected from their compressed air supply before repairs are attempted. Repairs shall be consistent with the manufacturer's recommended procedures. Tool, hoses and fittings shall be replaced if unsuitable for safe operation. It shall be the tool owner's and/or employer's responsibility to keep required rating markings and warnings on the tool in legible condition.

Read these instructions carefully before attempting to install, operate or service this Florida Pneumatic product. Failure to comply with the instructions could result in personal injury and/or property damage! Retain these instructions for future reference.

FPMC

Universal Tool

A Division of Florida Pneumatic Manufacturing Corporation

851 Jupiter Park Lane, Jupiter, Florida 33458

Toll Free 1-800-327-9403

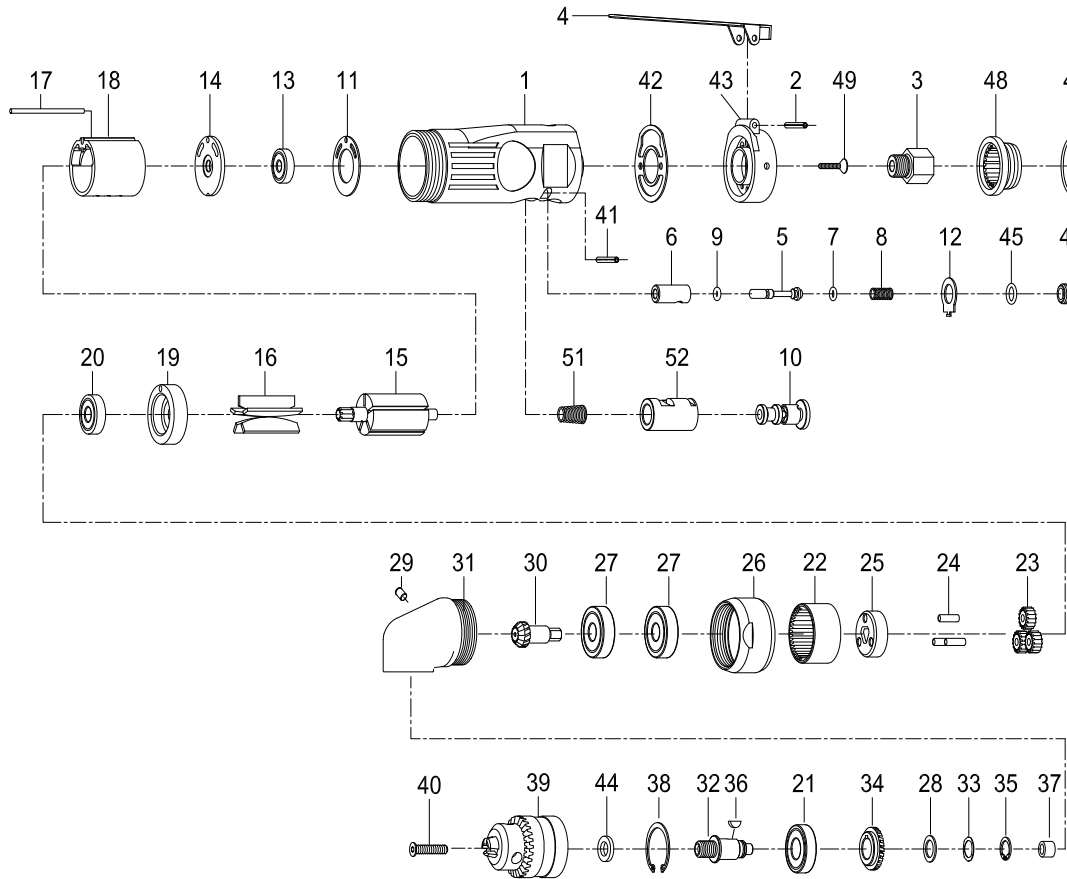


3/8" 1,800 RPM REVERSIBLE ANGLE DRILL

Specifications

Chuck capacity.....3/8"
 Free speed.....1,800 RPM
 Spindle thread.....3/8"-24
 Weight.....2½ lbs.
 Length.....7"
 Average air consumption.....5 CFM
 Recommended hose size.....3/8" I.D.
 Inlet size.....1/4" NPT
 Maximum operating pressure.....90 PSI

REF	PART #	DESCRIPTION	QTY	REF	PART #	DESCRIPTION	QTY
1	984201	MOTOR HOUSING	1	26	9709126R	LOCK RING	1
2	930102	SPRING PIN	1	27	9073434	BALL BEARING (6001ZZ)	2
3	951203	AIR INLET	1	28	9709128R	SPACER	1
4	984204	THROTTLE LEVER	1	29	956237	OIL CAP	1
5	984205	VALVE STEM	1	30	9709130R	PINION	1
6	984206	VALVE	1	31	9709131R2	ANGLE HOUSING	1
7	930107	O-RING	1	32	9709132R	SPINDLE	1
8	930108	SPRING	1	33	961931	WAVE WASHER	1
9	984209	O-RING	1	34	9709134R	GEAR	1
10	984210	REVERSE LEVER	1	35	9709112R	RETAINING RING	1
11	980211	MOTOR GASKET	1	36	9709136R	KEY	1
12	984212	REVERSE RETAINER	1	37	90709127R	NEEDLE BEARING	1
13	9030113	BALL BEARING (626ZZ)	1	38	960328	RETAINER RING	1
14	980214	END PLATE	1	39	5950	CHUCK W/KEY	1
15	970915R	ROTOR	1	40	978-7281R25	SCREW	1
16	980216	ROTOR BLADES	5	41	940337	SPRING PIN	1
17	980217-13	PIN	1	42	984254	REAR GASKET	1
18	980218	CYLINDER	1	43	984255	REAR COVER	1
19	970919R	FRONT END PLATE	1	44	970133	WASHER	1
20	9030120	BALL BEARING (608ZZ)	1	45	940134	O-RING	1
21	9060313	BALL BEARING	1	46	984246	THROTTLE VALVE PLUG	1
22	970922R	INTERNAL GEAR	1	47	951229	RETAINER RING	1
23	930123	PLANET GEAR	3	48	951206	EXHAUST DEFLECTOR	1
24	930124	PIN	3	49	984249	SCREW	2
25	970925R	CAGE	1	51	984251	SPRING	1
				52	984252	REVERSE BUSHING	1



Limited Warranty

Universal Tool warrants its tools to be free from defects in material and workmanship for one year from the date of purchase. This warranty does not apply to tools which have been abused, misused, modified or repaired by someone other than Universal Tool or its authorized service centers. If a Universal Tool proves defective in material of workmanship within one year after purchase, return it to any authorized service center or to Universal Tool, freight prepaid. Please enclose your name, address and adequate proof of purchase date with a brief description of the defect. Universal Tool will, at its option, repair or replace defective tools, free of charge. Repairs or replacements are warranted as described above for the remainder of the warranty period. Universal Tool's sole liability and your exclusive remedy under this warranty is limited to repair or replacement of the defective tool. There are no other warranties expressed or implied and Universal Tool shall not be liable for incidental, consequential or special damages, or any other damages, costs or expense of repair or replacement as described above.